

# amer

— YACHTS —

amer centro  
— quad —  
— premier —







amer cento



Amor Centro

DRIFTER



amer cento





amer cento

[www.ameryachts.com](http://www.ameryachts.com)







amer cento





amer cento





amer cento

[www.ameryachts.com](http://www.ameryachts.com)



amer cento











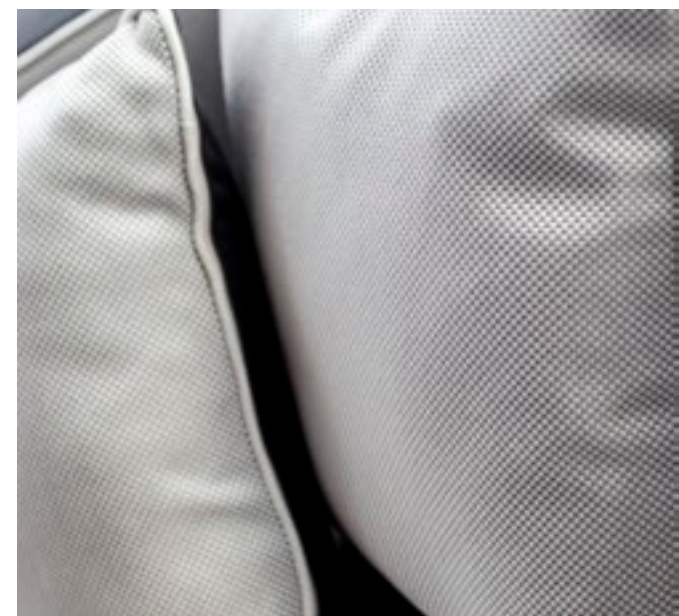




















amer cento  
[www.ameryachts.com](http://www.ameryachts.com)





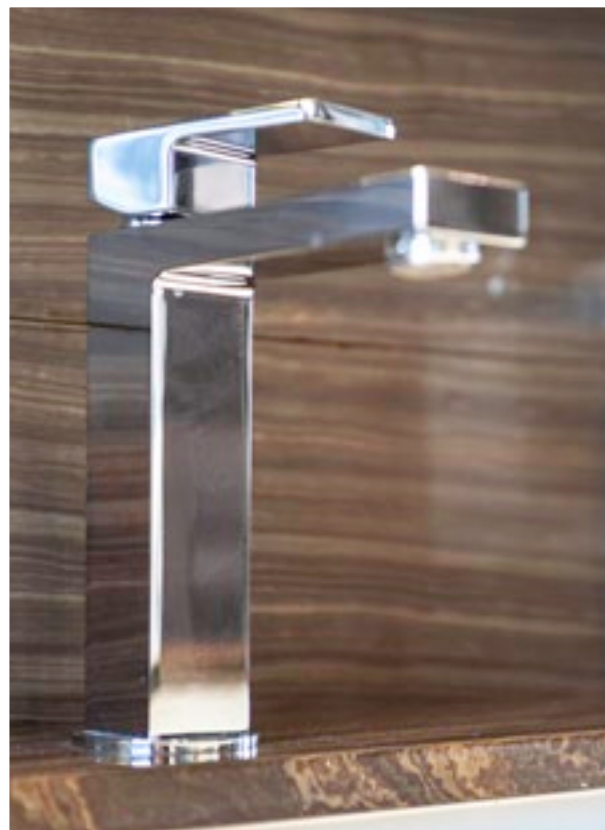


amer cento  
[www.ameryachts.com](http://www.ameryachts.com)





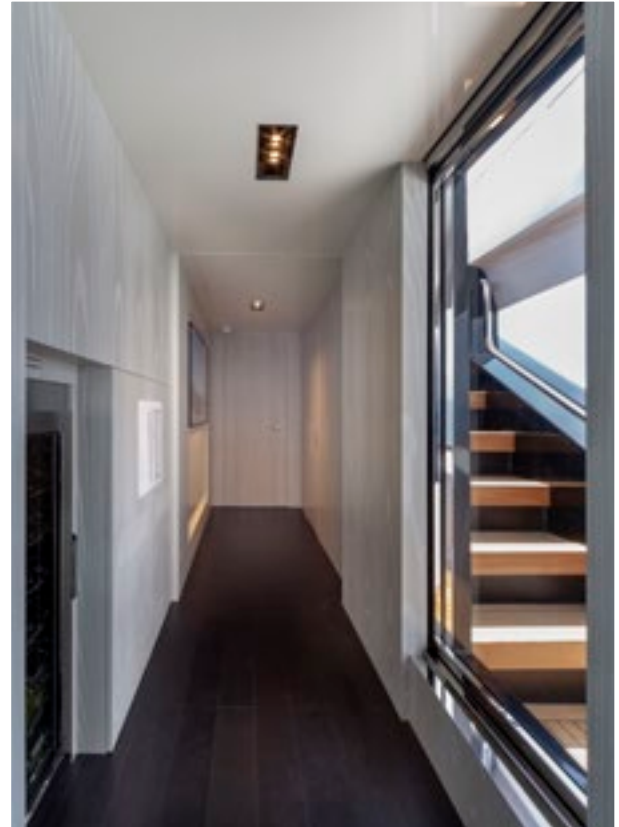




amer cento



amer cento  
[www.ameryachts.com](http://www.ameryachts.com)



amer cento





amer cento







amer cento

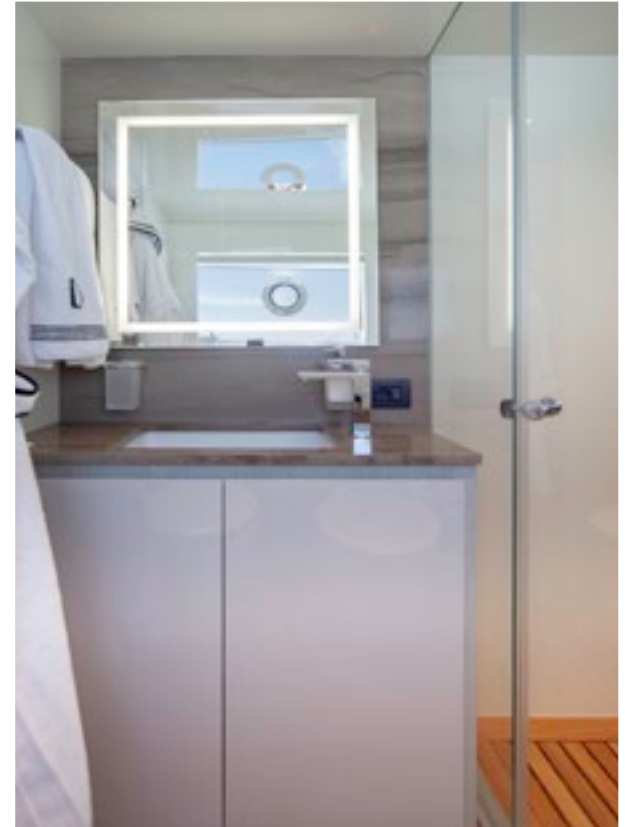








amer cento



amer cento



amer cento





amer cento

[www.ameryachts.com](http://www.ameryachts.com)

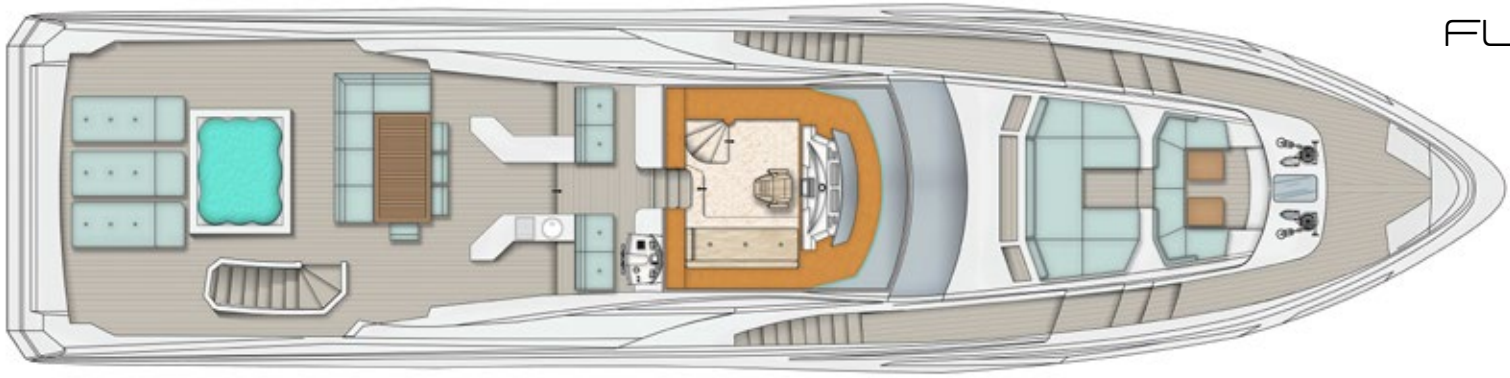






amer cento





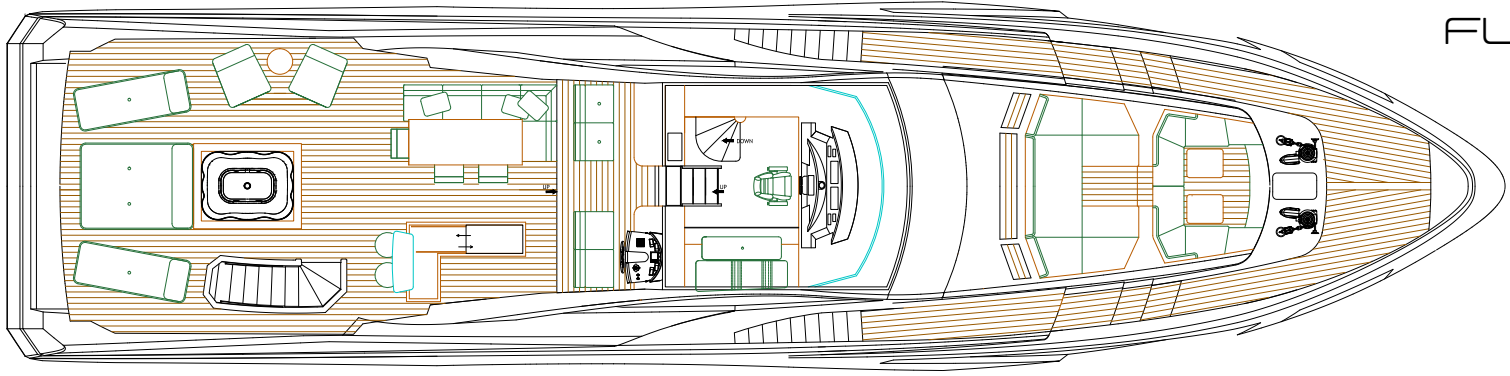
FLY DECK



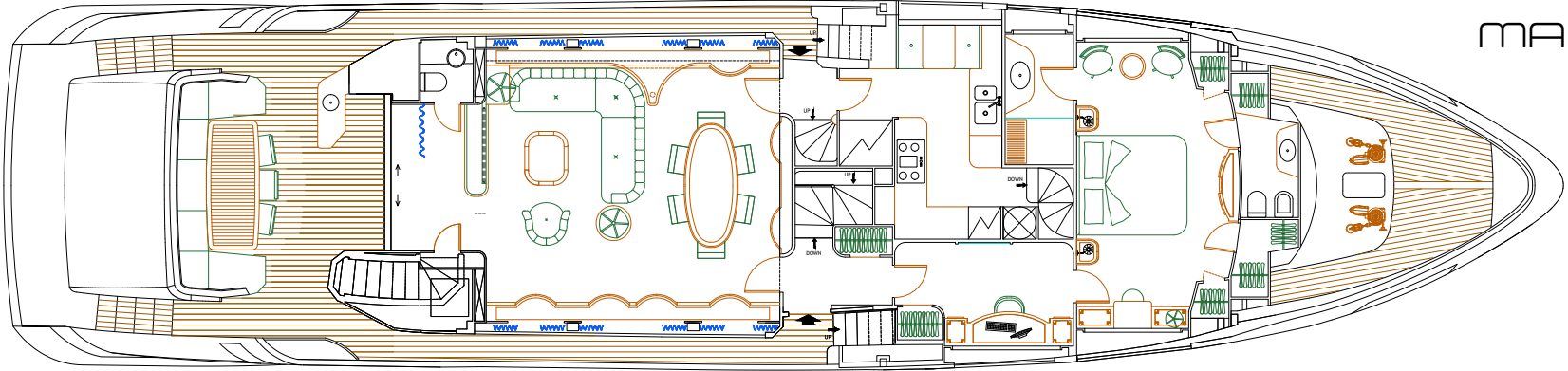
MAIN DECK



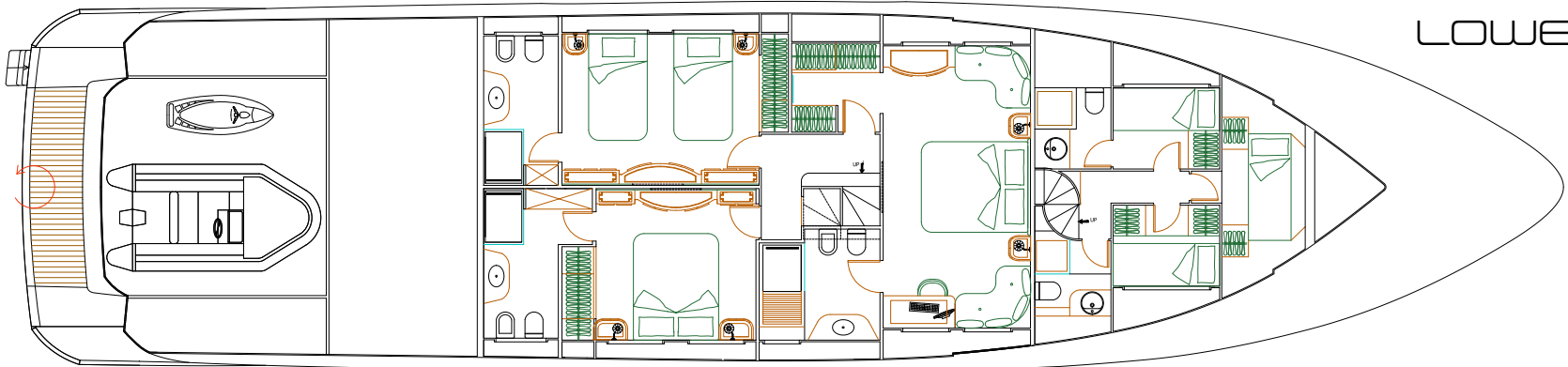
LOWER DECK



FLY DECK



MAIN DECK



LOWER DECK



FLY DECK



MAIN DECK



LOWER DECK

# amer cento









# amer cento

LOA  
Lunghezza scafo

29,60 m  
23,96 m

LOA  
Length hull

Larghezza  
Immersione massima

7,00 m  
1,95 m

Beam  
Maximum draft

Dislocamento

85 Tons

Displacement

Materiale

VTR

Material

Motorizzazione

4 x VOLVO PENTA IPS 1200

Propulsion

Combustibile  
Acqua dolce

8.500 l  
2.000 l

Fuel tank  
Water tank

Velocità di crociera  
Velocità massima

25±1  
30±1

Cruising speed  
Top speed

## Consumi / Consumption

	Velocità nodi Speed Kts	RPM	Consumi l/h Consumption l/h	LPM	Autonomia Autonomy
*Cr. Economica Economic cruise	9,1 kn	900	37	4,07	2088
* Crociera Cruising	25,3 Kn	2.100	501	19,8	429
Massima Max speed	30,2 kn	2.360	649	21,4	397

[www.ameryachts.com](http://www.ameryachts.com)



[www.ameryachts.it](http://www.ameryachts.it)